

LERDNTM

2-wire control signal surge protection device

LDY - C/V



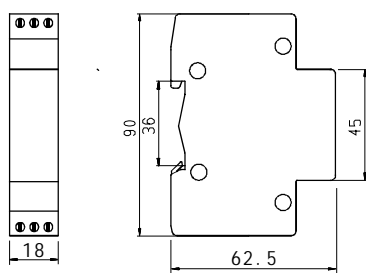
Application range

LDY-C/V series control signal lightning protection device are applicable to the front side of the control signal system device, providing protection against overvoltage arising from lightning to control signal or misoperation (option from standard IEC61643-21 and GB50343)

Main features

- ☆ Modularization, DIN rail design, convenient for installation and replacement.
- ☆ Introducing multilayer protection technology, strong protection ability, high reliability.
- ☆ Build-in earthing terminal, strong wiring ability, more reliable earthing.
- ☆ High current capacity and low output residual voltage.

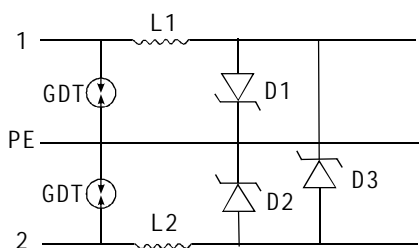
Appearance and installation dimension



Main technical data

Type	LDY-C/V5	LDY-C/V12	LDY-C/V24	LDY-C/V48
Rated working voltage U_n V	5	12	24	48
Max. continuous Voltage U_c V	8	18	36	75
Voltage protection level U_p V	<50	<50	<80	<150
Part No.	085301	085302	085303	085304
Normal discharge current I_n (8/20 μ s) kA	5			
Connection mode	wiring terminal			
Transmission rate V_s (bit/s)	2M			
Insertion loss dB	≤ 0.3			
Enclosure material	enhanced flame retardant nylon (light gray, flame retardancy: V0)			
Installation method	35mm standard DIN rail installation			
Cross-sectional area	$\geq 1 \text{ mm}^2$ stranded/flexible			

Schematic circuit diagram



Installation instruction

1. The protector connected in serial between the signal channel and the protected device.
2. Connect the input terminal to the signal channel, and the output terminal to the protected device, reverse connection prohibited.
3. Connect the earthing wire of the protector to the equalizing ring of the lightning protection system
4. Invalid system: the earthing short circuit or open circuit