

## Part No.

LDY-C/RJ45/L  
LDY-C/BNC/L  
LDY-C/RJ11/L

## Aluminum Shell SPD for Signal

### Main Features

- ☆ Aluminum profile shell, attractive and durable, good shielding effect.
- ☆ Standard interface, convenient to use, reliable connection.
- ☆ Adopt multilayer protection circuit, selecting the latest high-speed surge protection device of quick response, low output residual voltage and super transmission performance.

### Application Range

LDY-C/RJ45/L....series surge protective devices are applied to the electronic equipments of data system, such as modern in the computer network, server, working station, HUB, etc.;

LDY-C/BNC/L series surge protective devices for video signal are applied to coaxial transmission device such as main thin cable, thick cable, network wire, CATV, video monitoring device, public television, satellite television receiver and VOD system, etc.;

LDY-C/RJ11/L surge protective devices are applied to telephone, fax, program control machine room, etc.

They can prevent above systems or equipments from the permanent damage or transient interruption arising from inductive overvoltage or the other transient surge voltage caused by lightning or industrial noise, etc.

(option from IEC61643-21)

### Main Technical Data

Part No.	LDY-C/RJ45/L	LDY-C/RJ45/LK	LDY-C/BNC/L	LDY-C/RJ11/L
Rated working voltage $U_e$ V	5V	5V	12V	110V
Max continuous working voltage $U_c$ V	8V	8V	18V	130V
Nominal discharge current $I_n(8/20)$	2.5kA	2.5kA	5kA	2.5kA
Voltage protection level $U_p$ V	Line to line	<45V	<45V	<350V
	Line to earth	<500V	<500V	<750V
Transmission rate $V_s$	100M	1000M	16M	40M
Protection form	1,2,3,6 lines	1,2,3,4,5,6,7,8 lines	coaxial cable	3,4 lines
No.	808 001	808 004	808 011	808 009
Insertion loss dB	$\leq 0.5$ dB			
Response time $T_a$	Line to line	$\leq 1$ ns	$\leq 1$ ns	$\leq 1$ ns
	Line to earth	$\leq 100$ ns	$\leq 100$ ns	$\leq 100$ ns
Work temperature	$-40^\circ\text{C} \sim 70^\circ\text{C}$			

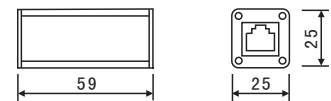
### Direction For Use

1. The protector connected in series between signal channel and protected device.
2. Connect the earthing wire of the protector to the equalizing ring of the lightning protection system, length of earth line should be less than 0.5m.
3. The surge protector is needless for special maintenance, when it is suspicious of the protector fault in system operation, please dismantle the spd module and then check. If the system recovers normality, spd has been broken down and needs replacement, During replacing spd module, circuit will not be cut of and can be work normal.

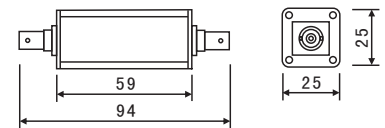
1



2



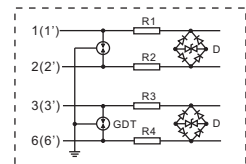
LDY-C/RJ45/L...LK, LDY-C/RJ11/L Appearance and Installation Dimension



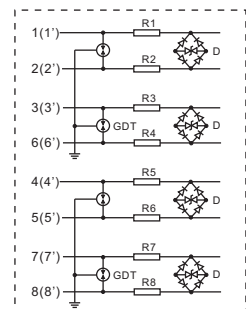
LDY-C/BNC/L Appearance and Installation Dimension

3

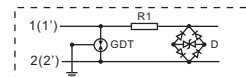
LDY-C/RJ45/L



LDY-C/RJ45/LK



LDY-C/BNC/L



LDY-C/RJ11/L

